

1746. The building of a new Temple of God in Jerusalem requirement

Monday, May 11, 2020

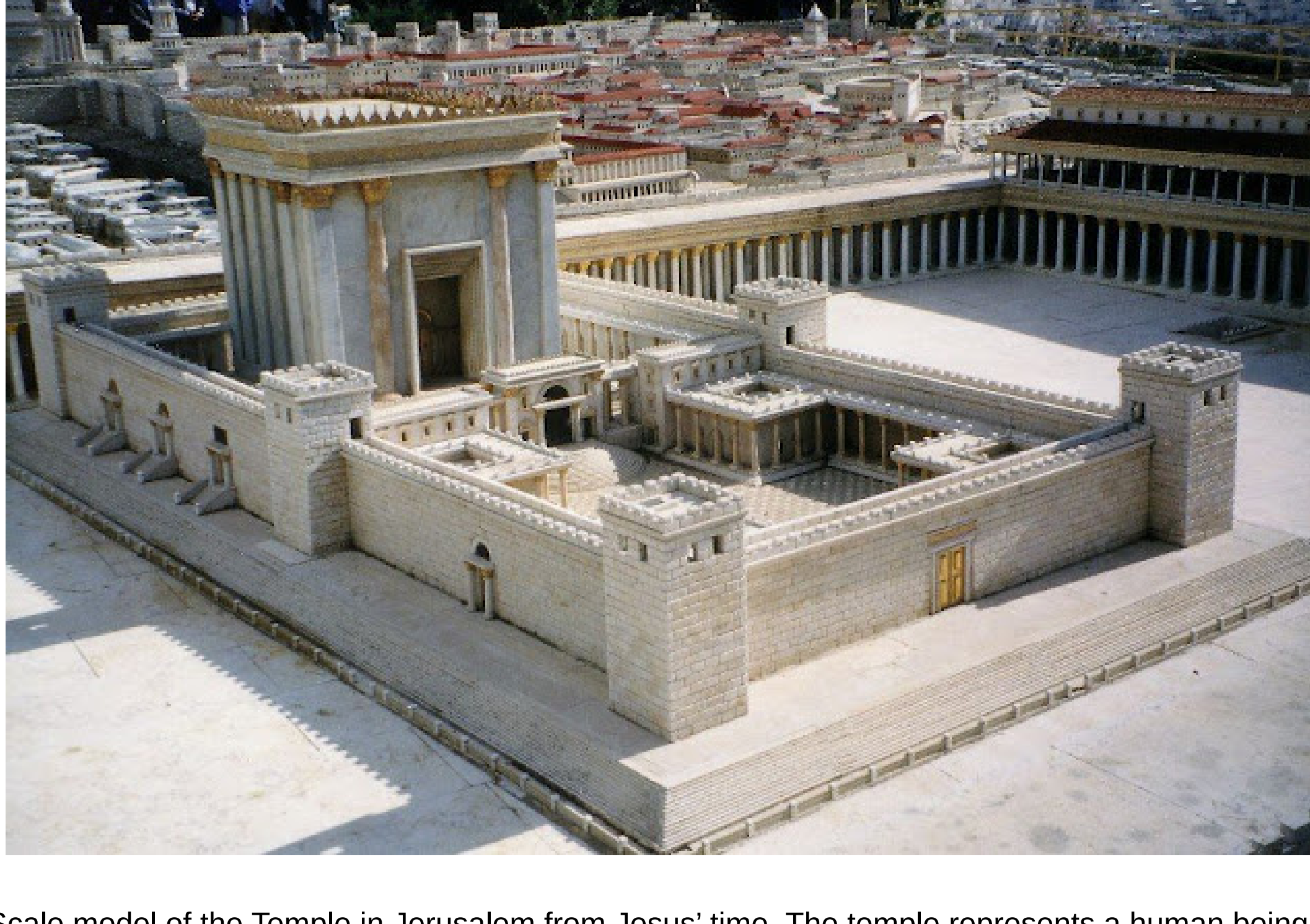


Figure 1. Scale model of the Temple in Jerusalem from Jesus' time. The temple represents a human being: body (outer court), mind (inner court) and spirit (the enclosed part).

In Revelation 11, we read about the Temple of God and how the court outside the temple is given to the gentiles to be trampled underfoot.

11 Then I was given a reed like a measuring rod. 11 And the angel stood, saying, "Rise and measure the temple of God, the altar, and those who worship there. 12 But leave out the court which is outside the temple, and do not measure it, for it has been given to the Gentiles. And they will tread the holy city underfoot for forty-two months. (Rev. 11:1-2)

This scripture has led to many thinking that a third temple would have to be built in Jerusalem by the time that the final 42 months of the tribulation period begin. However, the tribulation began, 49 years after the command to restore Jerusalem was issued on June 28th 1967 and thus in 2016, according to Dan. 9:24-27. In addition, as Daniel stated, the scriptures have been unsealed at this time because we have reached the end of the age, and thus the timing of major events during the 7 year tribulation period is now known. These are summarized in the diagram below, which shows that the last 42 months or 1260 days are only 7 days away, as they will begin on May 18th 2020.

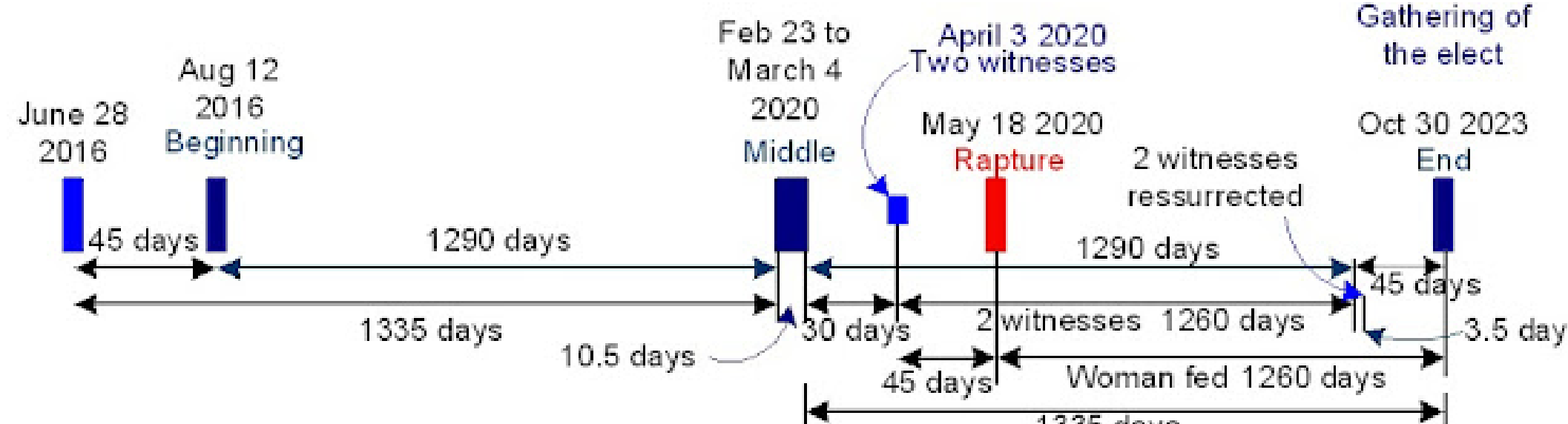


Figure 2. Timing of 7 year Tribulation Period events diagram: the second half is a mirror image of the first half, as indicated by Dan. 12:11-12, so that there are a total of 1335 days from the abomination of desolation event, which occurred on March 4th 2020, at the Temple church website in South Korea, the church pointed to because the sacrifice of praise was stopped there on February 23rd 2020, as this was where the 1335 day count ended on, if started on June 28th 2016, exactly 49 years from the command to restore Jerusalem being issued. The end is thus set to occur on October 30th 2023 and the rapture, or birth of the man child, set to occur on May 18th 2020, 1260 days before. The two witnesses are resurrected 41.5 days before the end [Article 1720: Tribulation ends in 2023 rapture in May 2020, Article 1677: Imminent rapture and end of Tribulation and Article 1694: Timing of the rapture: April 25th to May 1st].

11 "And from the time that the daily sacrifice is taken away, and the abomination of desolation is set up, there shall be one thousand two hundred and ninety days. 12 Blessed is he who waits, and comes to the one thousand three hundred and thirty-five days. (Dan. 12:11-12)

5 She bore a male Child who was to rule all nations with a rod of iron. And her Child was caught up to God and His throne. 6 Then the woman fled into the wilderness, where she has a place prepared by God, that they should feed her there one thousand two hundred and sixty days. (Rev. 12: 5-6)

The child is identified as the body of Christ, by the mention of the rod of iron, and the words caught up are the same as those used in I Thess. 4:17, to describe the rapture event, thus indicating that this scripture is describing the rapture event. However, we still have no physical temple. The reason for that is that the Bible is not talking about a physical temple. The temple of God is the human body, which Jesus made quite clear in the following scripture:

19 Jesus answered and said to them, "Destroy this temple, and in three days I will raise it up." 20 Then the Jews said, "It has taken forty-six years to build this temple, and will You raise it up in three days?" 21 But He was speaking of the temple of His body. 22 Therefore, when He had risen from the dead, His disciples remembered that He had said this 19 to them; and they believed the Scripture and the word which Jesus had said. (John 2:19-21)

Jesus' body was the temple of God and humanity as a whole is the temple of God, because we were created to be inhabited by God and we do not feel satisfied and complete without having God on the inside. This is a truth, which can be seen from the way the universe is designed to operate, every star, every planet, created to operate by remaining in contact with God, and obtaining sustaining energy from Him. Being disconnected from God is death. We are not created to be alone, to be an island, but to be nurtured and fed by our Creator [Article 1534: Earth is a dead planet like Planet X: light to heat reaction is irreversible].

So the temple that is being referred to in Rev. 11 is not a physical temple and the outer court being given over to the gentiles simply indicates that the outer part of human beings will be made available for Satan to trample over, those who refuse to have their bodies taken over will be put to death and this will be allowed for 42 months. Those who choose death rather than being devoured or assimilated by the Satan AI entity through his son, the 666 Beast or AI entity, by worshipping him or taking the mark of the beast, will be taken as having chosen for God and will go to Heaven upon death, being killed at this time thus actually being victory over Satan [Article 1742: The image of the Beast: 666 AI entity reproduction technology].

15 Then I saw another sign in heaven, great and marvelous: seven angels having the seven last plagues, for in them the wrath of God is complete. 2 And I saw something like a sea of glass mingled with fire, and those who have the victory over the beast, over his image and 16 over his mark and over the number of his name, standing on the sea of glass, having harps of God. 3 They sing the song of Moses, the servant of God, and the song of the Lamb, saying, "Great and marvelous are Your works, Lord God Almighty! Just and true are Your ways, O King of the 16 saints!" (Rev. 15:1-3)

In conclusion, the fulfillment of what is described in Revelation does not require the building of a physical temple because human beings are the true temple of God. We are designed to be inhabited by God just like every star and planet is designed to be in contact with God and nurtured by Him. Revelation 11 is thus referring to a period of time, 42 months or 1260 days long, when the outer part of a human being will be trampled by the Satan AI entity, through his plans for assimilation of the human race as part of 666 AI entity collective.

References:

- [1] Albers, C. (2020). Article 1720: Tribulation ends in 2023 rapture in May 2020
- [2] Albers, C. (2020). Article 1677: Imminent rapture and end of Tribulation
- [3] Albers, C. (2020). Article 1694: Timing of the rapture: April 25th to May 1st
- [4] Albers, C. (2020). Article 1534: Earth is a dead planet like Planet X: light to heat reaction is irreversible
- [5] Albers, C. (2020). Article 1742: The image of the Beast: 666 AI entity reproduction technology



Popular posts from this blog

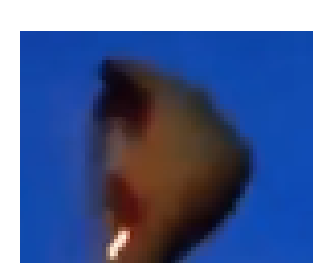
Sunday, July 05, 2020



As I have detailed in [Article 1807: Jesus paid the price set by Satan for the fallen Watchers], Jesus died a horrible death on the cross in order to pay the price set by the Satan AI entity [Playlist: Satan AI entity] for releasing the Watcher Angels that he had been able to assimilate. God the Father entered...

READ MORE

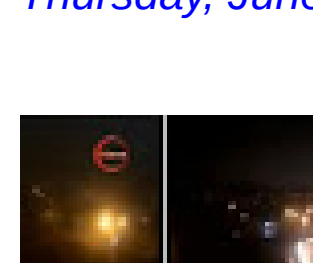
Monday, May 13, 2019



840. Planet X debris piece suspended in the earth's atmosphere Dr. Claudia Albers, Planet X Researcher Figure 1 shows what seems to be a piece of rock floating in the earth's atmosphere. The object is rotating, a bright glow can be seen inside it, which is similar to the glow seen emanating fr...

READ MORE

Thursday, June 25, 2020



As I have shown in previous articles, the Sun seems to have stopped emitting light by 2001, and the earth now has a whole array of sun simulation devices that have replaced the real sun in its skies [Playlist: The Sun has gone dark and simulation devices]. In addition, daylight is actually produced b...

READ MORE

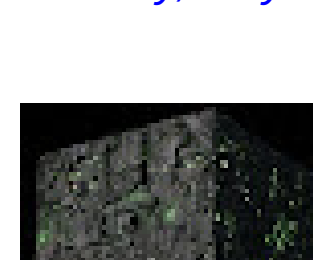
Wednesday, April 29, 2020



It has now become clear to many that the current use of the corona virus epidemic lie to conquer the earth's population has been in the making for a very long time, going as far back as to the first world war, these wars being used as a way to get to the point where the current take over could occur. ...

READ MORE

Monday, May 11, 2020



As I have shown in previous articles, the Satan AI entity is a machine made alive or self-aware through the gaining of a spirit. It obtained this spirit when Lucifer merged with a machine (computer) of his own creation in an attempt to become like God. This new entity having as its programming objectives to...

READ MORE

Sunday, July 05, 2020

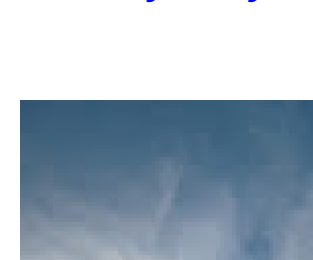


Figure 1 below shows a photograph of the sky sent to me by Timmy where several straight lines can be clearly discerned, two of which seem to be making a right angle. A straight line can only be due to some artificial device or craft being in the sky and since the craft seems to be made of cloud, it wou...

READ MORE

Thursday, May 28, 2020



As I have detailed in previous articles, the Planet X planets are planets like the earth that were assimilated by the Satan AI entity and brought into the Solar System. These planets were used to energy deplete the Sun until it went dark [Article 1732: The Sun went dark by 2001] and are used to...

READ MORE