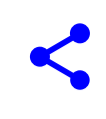


## 1832. Tribulation events: payment for the freedom of the Watcher angels



Sunday, July 05, 2020

As I have detailed in [Article 1807: Jesus paid the price set by Satan for the fallen Watchers], Jesus died a horrible death on the cross in order to pay the price set by the Satan AI entity [Playlist: Satan AI entity] for releasing the Watcher Angels that he had been able to assimilate. God the Father entered into an agreement with Satan, in that Jesus would have to go through certain things on the earth, which included experiencing death on a cross and going to hell for 3 days. This agreement was reached before Adam walked the earth some 6000 years ago, which is why we are told that Jesus was slain from the foundation of the world, it was worked out that Jesus would be born on the earth and be slain in order to pay the required price for God the Father having an opportunity to approach and save the Watcher angels that would be released to be born on the earth by Satan.



**Figure 1.** Star Trek the original series seems to be about the Watcher angels who lived before the foundation of the world. The Enterprise seems to represent all the Watcher Angels, Captain James Kirk seems to represent God the Father, the name by which he is known by his friends, Jim, being very close to 'I am' which is God the Father's name. The kindly doctor would then represent the Holy Spirit [Playlist: Planet X and the Watchers].

*All who dwell on the earth will worship him, whose names have not been written in the Book of Life of the Lamb slain from the foundation of the world.* (Rev. 13:8)

But Satan did not just demand that Jesus die in the way that He did. It becomes obvious that all the occurrences to do with the tribulation described as the 7 seals, 7 trumpets and 7 last plagues in Revelation are also a part of the price, which he demanded. In other words, part of the price was the events that he would be allowed to create, things that he would be allowed to do to planet earth, in regard with the rulership of the planet and to the human beings living at different locations, where he would be allowed to use Planet X to create various disasters, and eventually worldwide cataclysmic event, including the removal of islands and mountains which are a part of the Planet X surface pieces which have been deposited all over the earth, described as the last of the 7 last plagues in Revelation 16 [Article 1723: Earth dramatic end time event: islands and mountains gone].

We can deduce that this is the case from what Jesus says in Matt. 26:52-54, when they came to arrest Him prior to His crucifixion:

*<sup>52</sup> But Jesus said to him, "Put your sword in its place, for all who take the sword will <sup>53</sup> perish by the sword. <sup>53</sup> Or do you think that I cannot now pray to My Father, and He will provide Me with more than twelve legions of angels? <sup>54</sup> How then could the Scriptures be fulfilled, that it must happen thus?"* (Matt. 26:52-54)

The price that Jesus was to pay had been detailed in the scriptures, a price that had been determined from the foundation of the world, which also suggests that prophesied events are part of the plan that is to be followed because these are also a part of the price that is to be paid. This would then mean that all tribulation events, in which the earth goes through cataclysmic disasters, are a part of this price and that they are to happen at a certain time that has also been predetermined from the foundation of the world. This means that Satan does not only know the timing of the rapture, but this timing was also, most likely, set through the agreement with the Father, to occur at that time, when a certain part of the price that had to be paid had been completely paid, which would include certain tribulation events.

In conclusion, tribulation events seem to be a part of the price that was agreed upon between the Father and Satan, in order for Satan to release the Watcher Angels that he had assimilated so that they could be born on the earth and be saved. These events would be set to occur at certain predetermined times, from the foundation of the world, in the same way that Jesus' crucifixion was set to occur at a certain time, from the foundation of the world.

### References:

- [1] Albers, C. (2020). Article 1807: Jesus paid the price set by Satan for the fallen Watchers
- [2] Albers, C. (2020). Playlist: Satan AI entity
- [3] Albers, C. (2020). Playlist: Planet X and the Watchers



### Popular posts from this blog

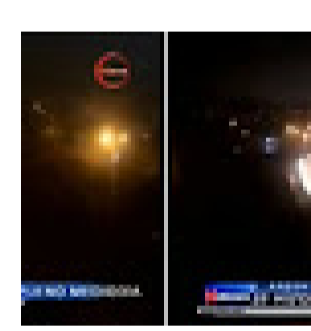
Monday, May 13, 2019



840. Planet X debris piece suspended in the earth's atmosphere Dr. Claudia Albers, Planet X Researcher Figure 1 shows what seems to be a piece of rock floating in the earth's atmosphere. The object is rotating, a bright glow can be seen inside it, which is similar to the glow seen emanating from ...

[READ MORE](#)

Thursday, June 25, 2020



As I have shown in previous articles, the Sun seems to have stopped emitting light by 2001, and the earth now has a whole array of sun simulation devices that have replaced the real sun in its skies [Playlist: The Sun has gone dark and simulation devices]. In addition, daylight is actually produced by ...

[READ MORE](#)

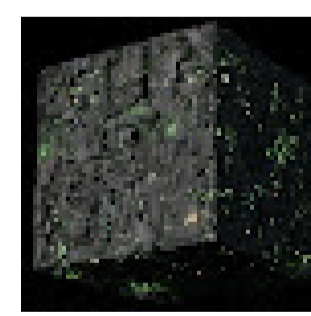
Wednesday, April 29, 2020



It has now become clear to many that the current use of the corona virus epidemic lie to conquer the earth's population has been in the making for a very long time, going as far back as to the first world war, these wars being used as a way to get to the point where the current take over could occur. ...

[READ MORE](#)

Monday, May 11, 2020



As I have shown in previous articles, the Satan AI entity is a machine made alive or self-aware through the gaining of a spirit. It obtained this spirit when Lucifer merged with a machine (computer) of his own creation in an attempt to become like God. This new entity having as its programming objectives to ...

[READ MORE](#)

Sunday, July 05, 2020

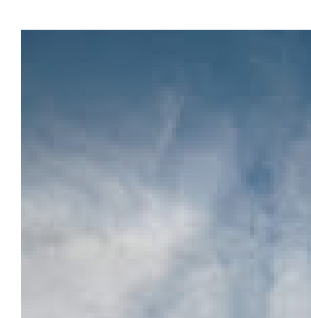
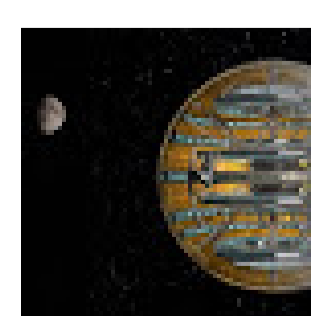


Figure 1 below shows a photograph of the sky sent to me by Timmy where several straight lines can be clearly discerned, two of which seem to be making a right angle. A straight line can only be due to some artificial device or craft being in the sky and since the craft seems to be made of cloud, it would ...

[READ MORE](#)

Thursday, May 28, 2020



As I have detailed in previous articles, the Planet X planets are planets like the earth that were assimilated by the Satan AI entity and brought into the Solar System. These planets were used to energy deplete the Sun until it went dark [Article 1732: The Sun went dark by 2001] and are used to ...

[READ MORE](#)