

1806. Earth as a Planet X planet: cloud forming on its surface



Sunday, June 14, 2020

As I have shown in previous articles, cloud in the sky in the form of waves or as clumps, which seem to spread as a sheet or carpet across the sky are forming on the surface of a Planet X planet that has been made to closely approach the surface of the earth and the fact that we are looking at a solid surface can usually be confirmed by the appearance of what seems to be clearings on the surface, but that are actually bulges on the surface of Planet X central cores. However, if the planet in the sky has not been destroyed to the point that all that is left of it is the central core, or if there are no developing cores on its surface to form bulges, then we would expect to just see cloud in clumps or waves, following the contours of the surface of the planet.

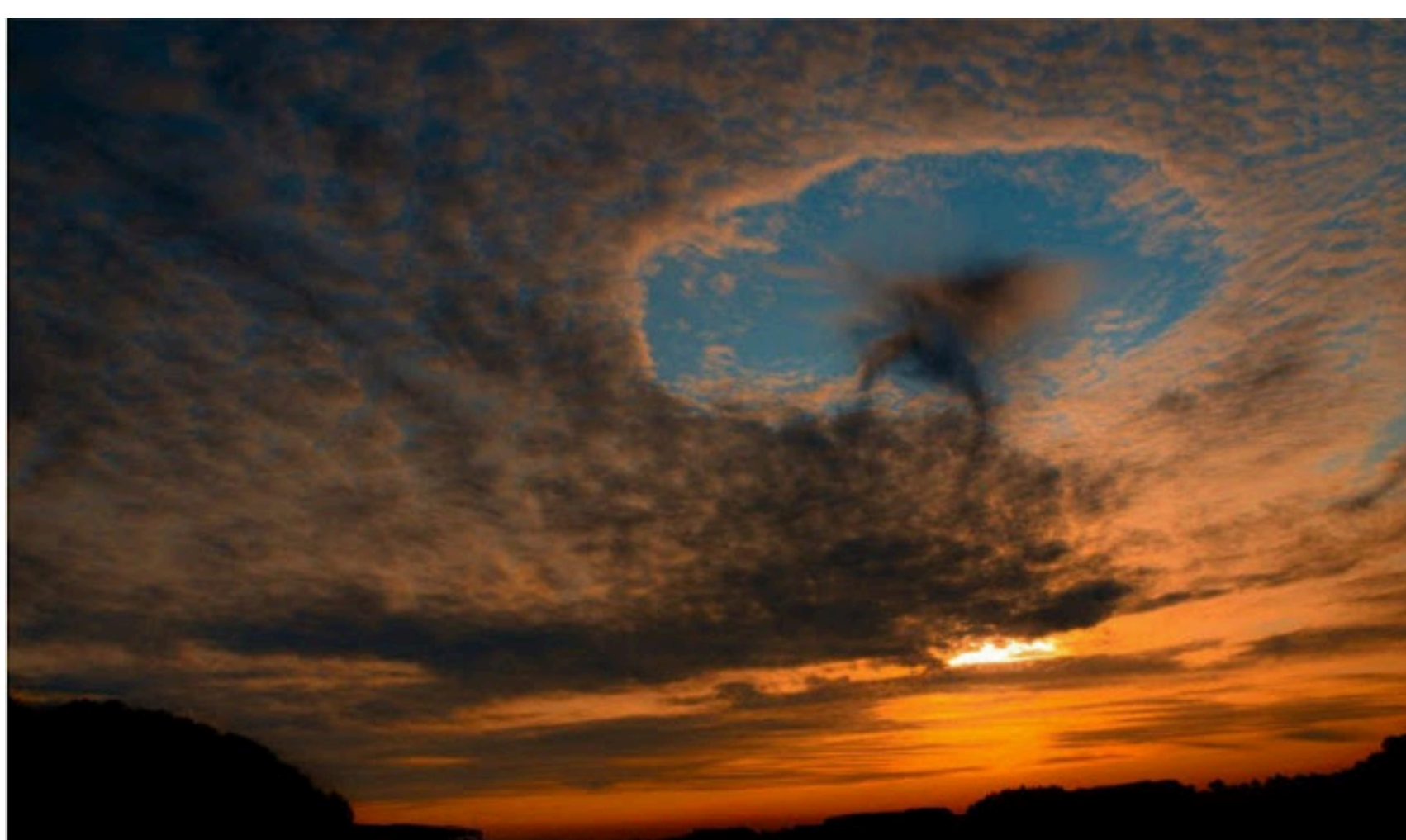


Figure 1. Planet X central core in the sky: The pink clumpy cloud seems to cling to a surface and follow the contours of that surface; the cloud seems to be blue over most of the bulge and between the clumps of pink cloud. Both the blue and the pink cloud are this color because they emit either pink or blue light.

The cloud on the surface of a Planet X core forms when the object enters the earth's atmosphere and will get denser as the objects is forced to move closer to the surface of the earth and the gravitational connections it is able to make strengthen. The pink color is usually seen at sunset and seems to be associated with the object moving to a certain altitude, usually higher, which causes the energy flowing through the earth's atmosphere to decrease. The decreasing energy seems to decrease the amount of green light energy available to the cloud which then causes white cloud to turn pink [Article 1803: Purple sky in Brazil at sunset due to Planet X or Playlist: Planet X observations].



Figure 2. Photographs sent in by Arnold of the sky, on February 29th 2020, over south Massachusetts. Very distinct cloud structures can be seen, which give an indication of the features on the surface the planets that are being forced to move in toward the surface of the earth. Some of the clouds can be seen to be turning from blue to white. The stringy cloud on the left suggests that the cloud is forming over a long rectangular bulge and thus a developing core on the surface of the planet. The light source in the sky is a sun simulator as it seems to be white or pink and far from perfectly circular, as the real sun would have been [Playlist: The sun has gone dark].



Figure 3. Cloud forming on the surface of the earth just like it forms on the surface of the Planet X planets thus showing that earth is just like one of the Planet X planets. The cloud forms a wave pattern, is blue in places, pink in others, and follows the contours on the surface. Some of the blue cloud seems to have formed a very smooth outer surface and to thus be just like the blue portions seen in the sky.

As the earth continues to become increasingly energy depleted, it is to be expected that eventually Planet X planets that are not as energy depleted as the earth will be made to approach it, in which case, we would expect to have cloud forming on the earth's surface in the same way that it forms on the surface of these planets. Any observer on the surface of the Planet X planet in the sky over Somerset, when that cloud formed, would have seen something similar to what we see in our skies.



Figure 4. Cloud with a wavy pattern and thus the type of cloud expected to form on the surface of a Planet X planet. The wavy clumps remain in a stationary position with respect to each other and spread across the sky, as on a two dimensional surface or carpet, thus showing that they are attached to the solid surface of a planet.

In conclusion, cloud forms on the surface of the earth, clinging to it, and following the contours of its surface, even as it does on the surface of the Planet X planets, seen in the sky from the surface of the earth, which shows that the earth is just another Planet X planet.

References:

- [1] Albers, C. (2020). Article 1803: Purple sky in Brazil at sunset due to Planet X
- [2] Albers, C. (2020). Playlist: Planet X observations
- [3] Albers, C. (2020). Playlist: The sun has gone dark



Popular posts from this blog

Thursday, June 25, 2020



As I have detailed in previous articles, aliens (the Satan AI entity and his angels) are using the Planet X planets to control the earth environment [Article 1563: Planet X brought into Solar System by aliens: the planetary farmers]. These aliens also used Planet X to cause the flood and to create earth's ...

READ MORE

Tuesday, June 23, 2020

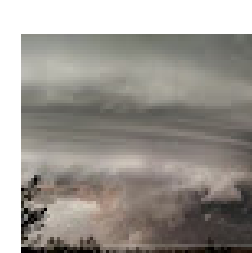


Figure 1 below shows a huge cloud vortex in the sky over Nebraska from a MrMBB333 video. The open cylindrical shape of the cloud identifies it as forming along a vortex, which is a gravitational connection between a Planet X core, in the sky, and an earth core, inside the body of the earth. The ...

READ MORE

Thursday, June 25, 2020



As I have shown in previous articles, the Sun seems to have stopped emitting light by 2001, and the earth now has a whole array of sun simulation devices that have replaced the real sun in its skies [Playlist: The Sun has gone dark and simulation devices]. In addition, daylight is actually produ...

READ MORE

Sunday, June 21, 2020



Figure 1 below shows some screenshots from a video of the sky over Birmingham, where a huge pink semi-circle can be seen, which makes it look as if a huge planet is in the sky. However, the secondary pink edge makes this look very much like the pink rainbow that has been seen before. ...

READ MORE

Wednesday, June 24, 2020

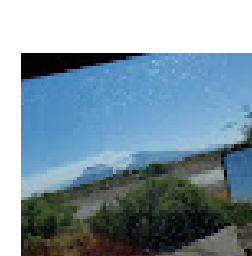


Figure 1 below shows some photographs sent to me by Yeshurun from June 6th 2020 of the cloud which was coming from the top of the mountain in Arizona on account of the fire that was taking place there, who also thought it strange that the worst of the fire should be coming fro...

READ MORE

Monday, June 29, 2020



Figure 1 below shows a report by Strange Sounds on Locust plagues that have been affecting South America and talks about a huge swarm heading for Brazil and Uruguay. However, locusts are not flying insects, as they cannot seem to do much more than hop on earth; where they ...

READ MORE

Tuesday, June 23, 2020

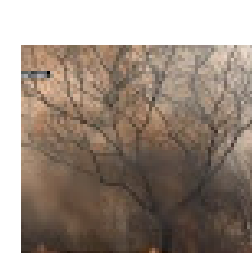


Figure 1 below shows a screenshot from a Euronews report about the fires taking place in the Amazon that are leading to its deforestation and explaining that it is all due to human encroachment, i.e. due to the clearing of land for the planting of crops, where the land is ...

READ MORE