

1803. Purple sky in Brazil at sunset due to Planet X

Friday, June 12, 2020

Figure 1 below shows a photograph sent to me by Nilton of the sky at sunset in Salvador, Bahia, Brazil, on June 11th 2020. The clouds in the sky are pink or magenta and the background color of the sky is purple instead of the usual blue. This is exactly the type of color in the sky that started me investigating what was going on the earth and in the Solar System, with regards to Planet X. But here the whole sky is pink or purple, which I have not seen before. The sun cannot cause such colors to appear in the sky, because magenta is a combination of blue and red and at sunset the blue color is supposed to be absorbed by the atmosphere so that the sun looks red. However, all the colors making up white light are still available in the atmosphere so that clouds should remain white, but they don't, which shows that something else is going on.



Figure 1. Left: Cloud turns pink at sunset over Salvador, Bahia, Brazil, on June 11th 2020. The background sky turns purple instead of blue. Right: Additive theory of light discovered by Newton in the 17th century. Pink is a combination of blue and red. Purple is produced from the same combination but with a greater quantity of blue in the mix.

In order for the background sky to turn purple, the atmosphere at high altitude has to emit purple light instead of blue light, which would indicate that it is emitting a combination of red and blue.



Figure 2. As sunset progresses the colors change: the pink getting darker and even more dramatic. The background sky remains purple.

Daylight and night time is produced through the use of Planet X on earth where Planet X planets, or often, what is left of them, are placed in the sky at certain altitudes. For daylight to be produced, Planet X planets are placed in the sky so that energy flows from the earth's core through the atmosphere, which then causes it to emit light. The light emitted by the atmosphere from a certain altitude is blue, which makes the sky look blue from the surface.



Figure 3. Screenshots from a television news report in Argentina on August 12th 2011, where the sky went completely dark in the middle of the day: An extremely large region went completely dark as we can see just a little greyish light close to the horizon, in the distance, in the screenshot on the right. The greyish light is the amount of light that the earth was capable of emitting at the edge of the dark region [Article 1272: The earth is going dark].

The grey lighting close to the horizon clearly shows that it is coming from the surface not from outside the earth's atmosphere. It also shows that the Sun has gone dark as this was the middle of the day. The reason why this occurs is because there is no Planet X planet in the sky at a low enough altitude to draw energy from the earth's core system and thus produce daylight, in the earth's lower atmosphere.



Figure 4. The earth's atmosphere is also tending to turn opaque blue instead of transparent, even at low altitudes, thus causing valleys in shadow to look blue. This is a sign of earth's increased energy depletion, where it now emits blue light at low altitudes like it used to, from only high altitudes, in the past.

Since Planet X is what is used by the aliens to produce daylight in the earth's atmosphere, we can expect them to also use Planet X to produce the transition from light to darkness at sunset, the light produced in the sky then being the product of the particular planet placed above the surface of the earth at that time and the energy that it draws from the earth's core system.



Figure 5. Sky at sunset in Pennsylvania on June 11th 2020: Clouds that were a combination of white and grey, a few minutes prior to the photograph being taken, turn peachy pink and grey. The pink comes from the bottom of some clouds, from above the cloud in others, from the right in some and from the left, in others, so that it is obvious that the color cannot be due to the clouds reflecting light. The color has to be due to the energy that is flowing through the atmosphere and if white turns to pink, then the green light that if added to pink light would turn it to white is no longer available, the clouds no longer emit it.

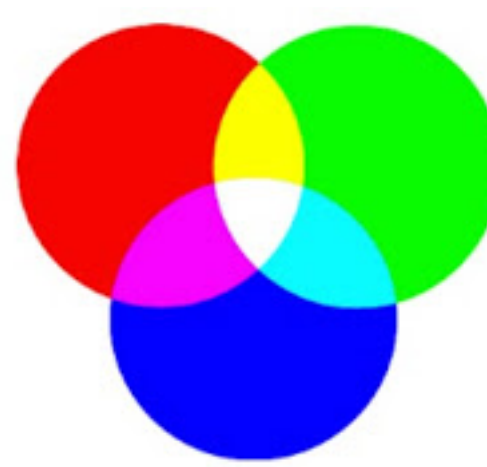


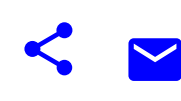
Figure 6. White is a combination of red, blue and green. When green is removed, only red and blue is left which looks pink.

Thus at sunset, the Planet X planets must be moved so that less energy flows through the earth's atmosphere, which then causes the green part of the spectrum to be reduced, so that it is no longer available in a large enough quantity for the clouds to emit it, which then causes the clouds to turn pink. This is most likely achieved by the aliens through the moving of the Planet X planets to a slightly higher altitude. Then, as the planets are moved further and further out, the sky becomes darker until it turns to night, at which time the holographic projectors are used to project night time stars [Article 1732: The Sun went dark by 2001 or Playlist: The sun has gone dark].

In conclusion, a dramatic pink and purple sunset was observed in Brazil, on June 11th 2020. Just like daylight is being produced by the aliens with Planet X, the colors seen at sunset have to also be produced with Planet X, as the clouds emit light according to the energy flowing through the earth's atmosphere which is controlled through the placing of Planet X planets above the surface of the earth.

References:

- [1] Albers, C. (2020). Article 1272: The earth is going dark
- [2] Albers, C. (2020). Article 1732: The Sun went dark by 2001.
- [3] Albers, C. (2020). Playlist: The sun has gone dark



Popular posts from this blog

Thursday, June 25, 2020



As I have detailed in previous articles, aliens (the Satan AI entity and his angels) are using the Planet X planets to control the earth environment [Article 1563: Planet X brought into Solar System by aliens: the planetary farmers]. These aliens also used Planet X to cause the flood and to create earth's ...

READ MORE

Tuesday, June 23, 2020

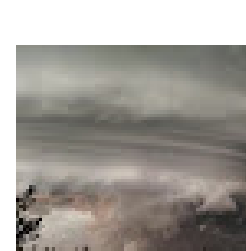
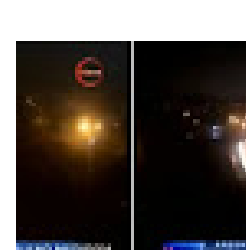


Figure 1 below shows a huge cloud vortex in the sky over Nebraska from a MrMBB333 video. The open cylindrical shape of the cloud identifies it as forming along a vortex, which is a gravitational connection between a Planet X core, in the sky, and an earth core, inside the body of the earth. The ...

READ MORE

Thursday, June 25, 2020



As I have shown in previous articles, the Sun seems to have stopped emitting light by 2001, and the earth now has a whole array of sun simulation devices that have replaced the real sun in its skies [Playlist: The Sun has gone dark and simulation devices]. In addition, daylight is ...

READ MORE

Sunday, June 21, 2020

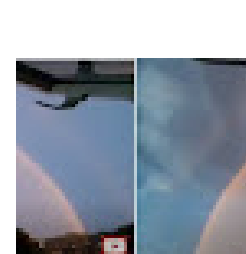


Figure 1 below shows some screenshots from a video of the sky over Birmingham, where a huge pink semi-circle can be seen, which makes it look as if a huge planet is in the sky. However, the secondary pink edge makes this look very much like the pink rainbow that has ...

READ MORE

Wednesday, June 24, 2020

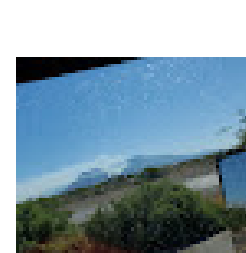


Figure 1 below shows some photographs sent to me by Yeshurun from June 6th 2020 of the cloud which was coming from the top of the mountain in Arizona on account of the fire that was taking place there, who also thought it strange that the worst of the fire should be coming from ...

READ MORE

Monday, June 29, 2020



Figure 1 below shows a report by Strange Sounds on Locust plagues that have been affecting South America and talks about a huge swarm heading for Brazil and Uruguay. However, locusts are not flying insects, as they cannot seem to do much more than hop on earth; where they ...

READ MORE

Tuesday, June 23, 2020

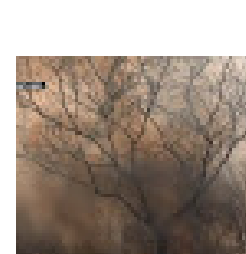


Figure 1 below shows a screenshot from a Euronews report about the fires taking place in the Amazon that are leading to its deforestation and explaining that it is all due to human encroachment, i.e. due to the clearing of land for the planting of crops, where the land is ...

READ MORE