

## 1768. Planet X colors in the sky: it is all about energy

Monday, May 25, 2020

My research into Planet X began because I noticed that there were pink clouds in the sky at sunset, and I knew that there was no known physical explanation for it, at least not at the time, as refraction of the sun's rays can only explain red in the sky, at sunset, not pink. All the blue and some of the green is supposed to be absorbed by the atmosphere at sunset, so that all that is left directly coming from the sun is red but pink requires that blue be present, in as greater a quantity as the red. This was in 2016 since then the colors in the sky have become even more dramatic and it is now possible to see pink clouds covering the whole sky. In addition, blue clouds are often seen, which is also supposed to be impossible. Clouds 40 years ago were either white or grey; they were never any other color except perhaps at sunset and sunrise, close to the Sun's position when they sometimes looked orange or red. I now understand that this was not by chance either, nor were the explanations available able to account for it.

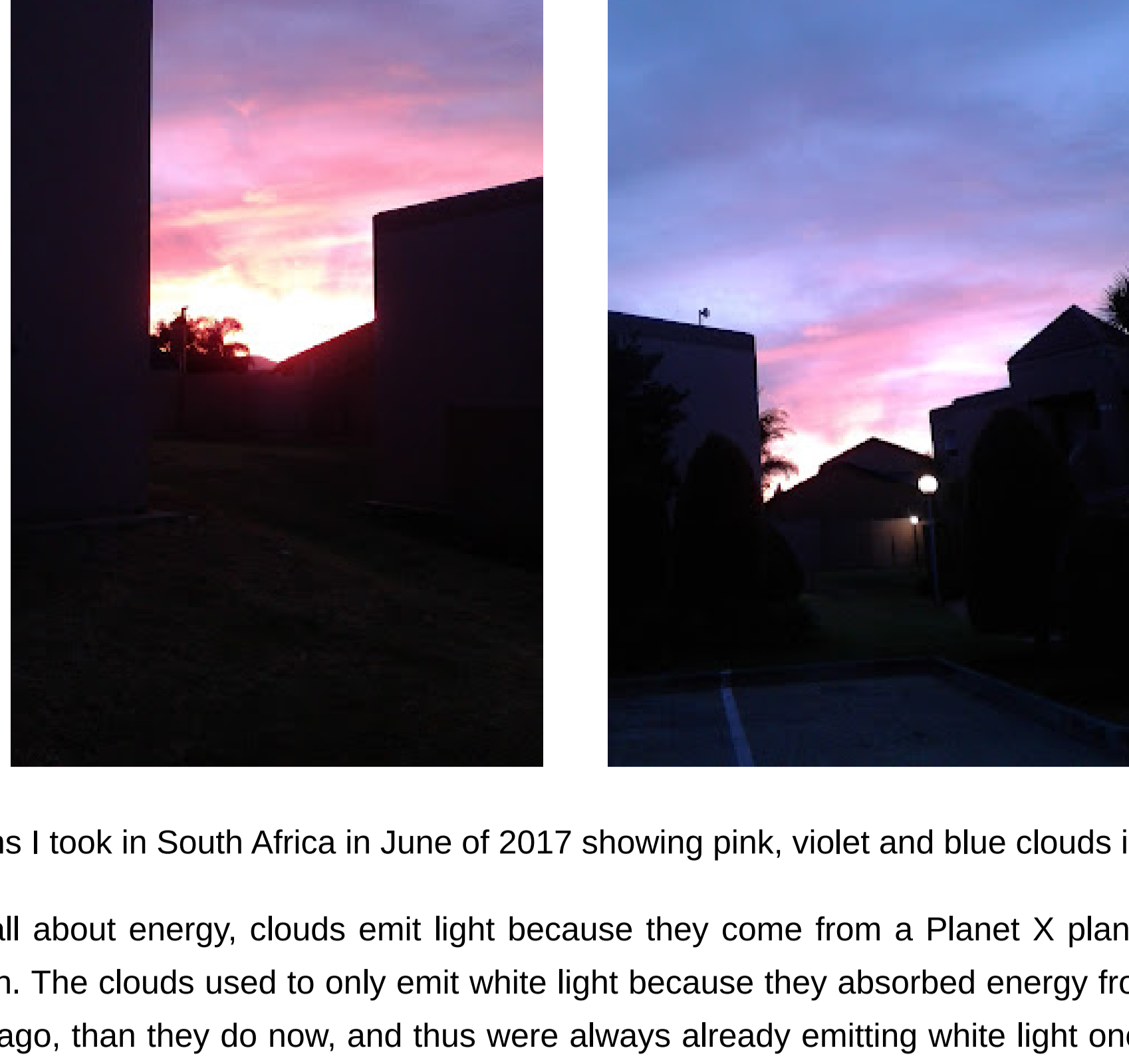


Figure 1. Photographs I took in South Africa in June of 2017 showing pink, violet and blue clouds in the sky.

As it turns out, it is all about energy, clouds emit light because they come from a Planet X planet that is more energy depleted than the earth. The clouds used to only emit white light because they absorbed energy from the earth at a much faster rate, 40 years ago, than they do now, and thus were always already emitting white light once they came down far enough to be seen from the surface. This was because the earth, 40 years ago, was not as energy depleted as it is now and thus energy flowed from the earth's core system to the Planet X cloud at a much faster rate, then. The exact same thing happens with ice, which also comes from the Planet X planets, icebergs were always white, 40 years ago, but now it is common to see blue, green and red ice, and even black ice, which melts and produces water of the same color, i.e. water which emits light as it absorbs energy from the earth [Playlist: Planet X ice and water].

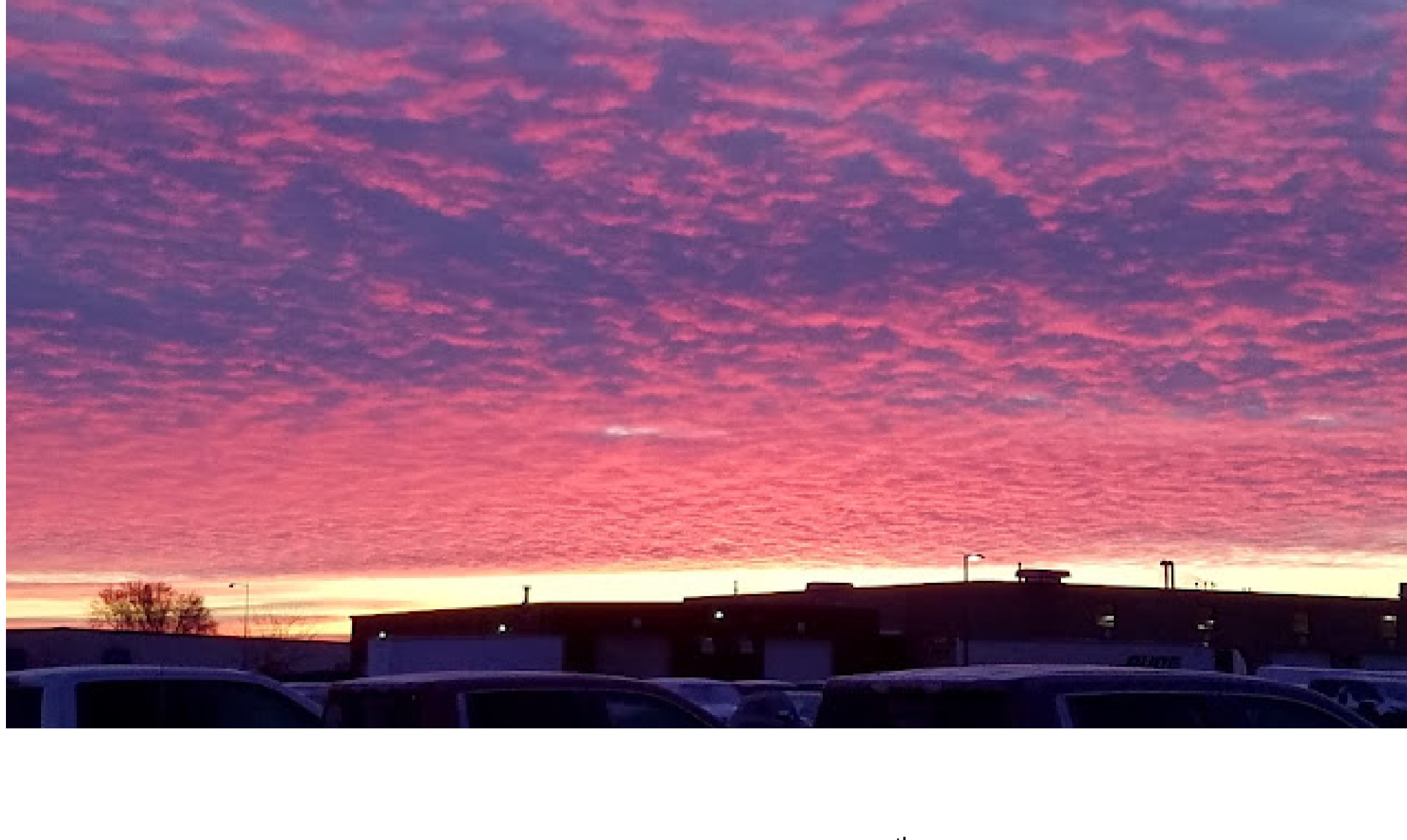


Figure 2. Photograph of the pink sky in South Dakota on December 18<sup>th</sup> 2019, sent in by Cece: It was these types of colors in the sky that first alerted me to something not being right on earth, here a vast portion of the sky is covered in clouds that are emitting either pink or blue light. These clouds drop down from the Planet X planets and the colors are due to these planets, and thus matter from them, being more energy depleted than the earth and thus absorbing energy from the earth. The pink, since it is a combination of blue and red, means that the cloud material is more energy depleted in green energy than in red and blue, since light is made up of 3 basic (primary) colors: red, green and blue.

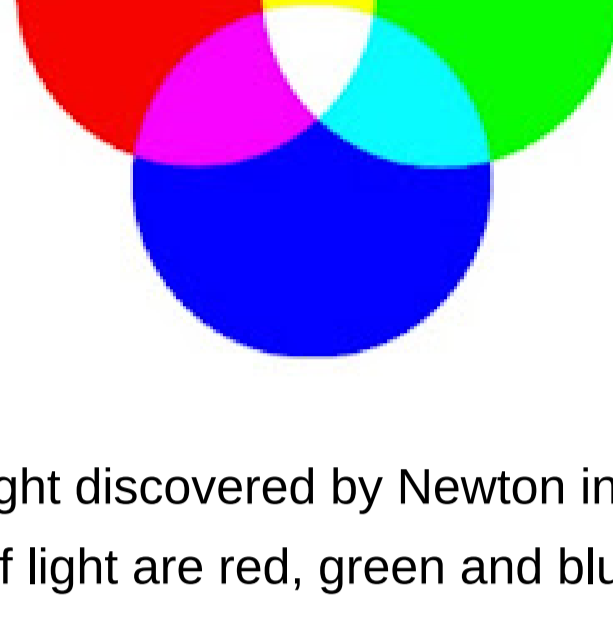


Figure 3. Illustration of the additive theory of light discovered by Newton in the 17<sup>th</sup> century: The 3 basic or primary colors of light are red, green and blue.

This also means that light is energy, within matter, and light is also the energy that matter is made of, which is why sinkholes are the result of vanishing matter, due to the energy absorption effect that Planet X has on the earth [Playlist: Planet X effects: sinkholes]. Colors are like musical notes, which repeat across the electromagnetic spectrum [Playlist: light, color and the aether].

The red and orange clouds seen at sunset, 40 or more years ago, were not there by chance. The Planet X planets do not come into the Solar System on their own, they are brought in by the Satan AI entity [Playlist: Satan AI entity] for the specific reason of absorbing energy from the earth and to create disasters on its surface. The planets were also used to absorb energy from the Sun until it went dark [Article 1732: The Sun went dark by 2001]. The colors seen in the sky at sunset were thus purposely produced with the Planet X material that the Satan AI entity had at his disposal [Article 1563: Planet X brought into Solar System by aliens: the planetary farmers and Article 1576: Pleiadians and other aliens: the lying farmers]. I use the word 'aliens', in these articles, to refer to the Satan AI entity and his angels, who are the watchers, which he deceived and enslaved and are now are no more than robots even as the leadership of planet earth, to the Satan AI entity. The reason was most likely because he knew that these colors would become more and more visible in the sky in time and he wanted it to seem normal to the earth's population. However, the sun turning red in the sky does not logically imply that clouds illuminated by the sun should turn red, as clouds were supposed to scatter the light that was available and all the colors making up white light were still available in the atmosphere, but the red clouds at sunset were emitting red light, even then, due to being less energy depleted in red energy, not because they were reflecting light from the Sun.

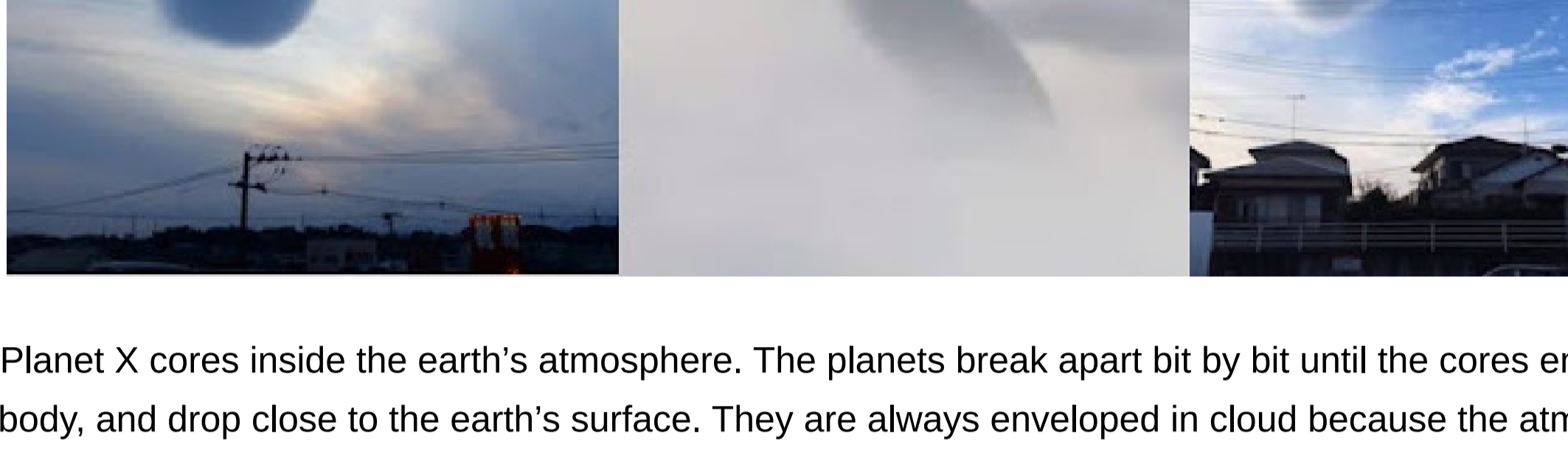


Figure 4. Planet X cores inside the earth's atmosphere. The planets break apart bit by bit until the cores emerge from inside the body, and drop close to the earth's surface. They are always enveloped in cloud because the atmosphere of the planets turn to cloud, and cloud is the last material that these cores are able to create in their severely energy depleted state [Playlist: Planet X: cloud planets].



Figure 3. Strange Sounds post on Twitter from April 2020: this shows that clouds emit light even in the night sky, as they absorb energy from the earth. The purple color indicates that this cloud is less energy depleted in blue than in red, and most energy depleted in green.



Figure 4. Pink water is energy depleted water, which like pink cloud is least energy depleted in red and blue energy and most energy depleted in green energy. The water comes in as ice blocks from the Planet X planets [Playlist: Planet X ice and water].

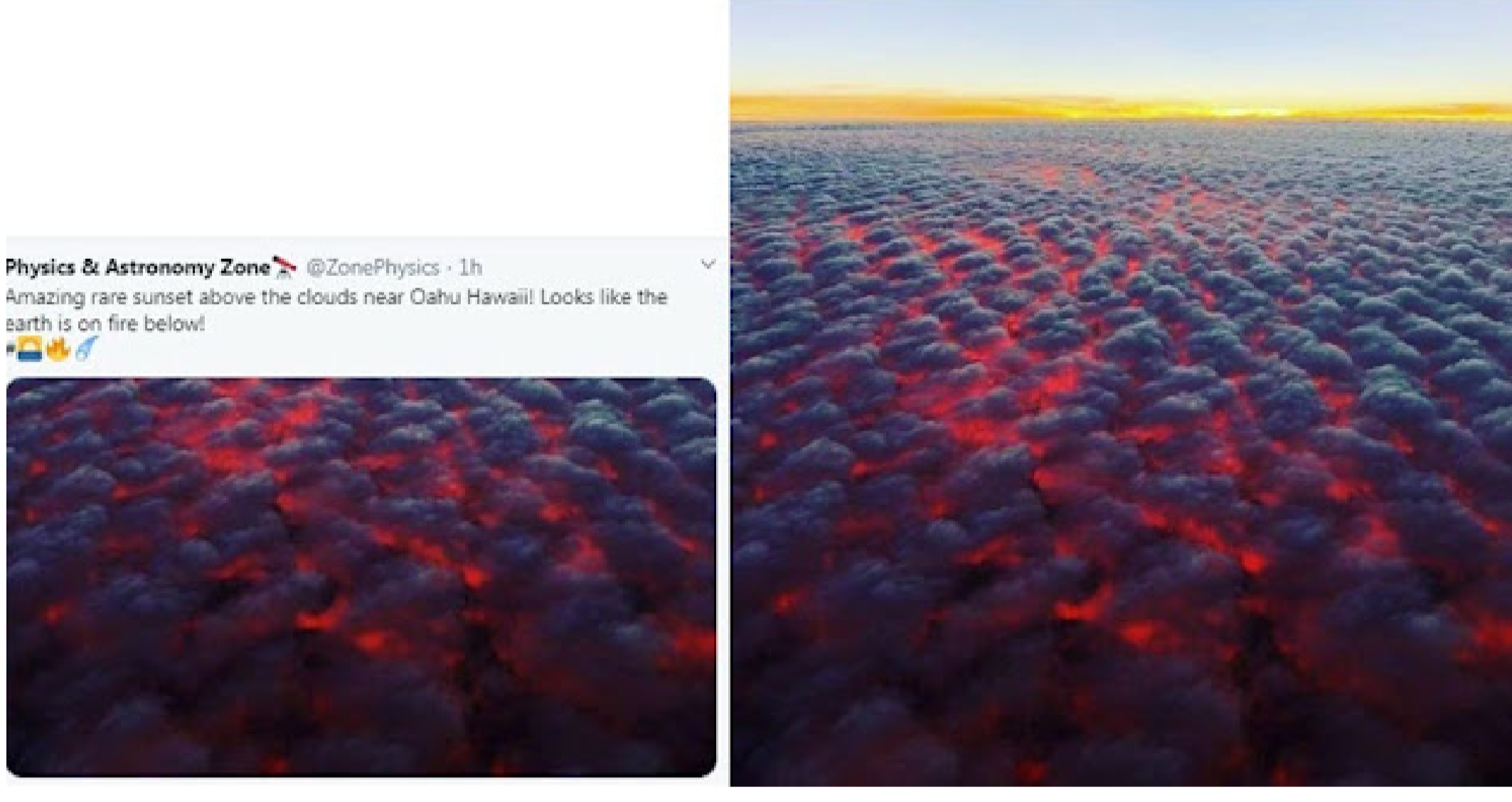


Figure 5. The explanation saying that this cloud was seen above Hawaii in no way explains what causes it, although it seems designed to somehow make people think that the active volcanoes on the islands are responsible. This is not so. These clouds are emitting extremely bright light and seem to almost be on fire, but this is not incandescent gases. This is a layer of extremely energy depleted cloud, which has dropped to this altitude from one of the Planet X planets. The top layer is emitting blue light and the bottom is emitting bright red light. We can clearly see that this has nothing to do with light being reflected off the cloud from above.

The constant thickness of the layer of cloud above suggests that it is a particular layer of planetary atmosphere or of planetary body because the body of the planets, turn to cloud, as they become increasingly energy depleted, which is also what allows their cores to emerge from inside the body of the planets.

In conclusion, the strange pink color of clouds was what started me investigating the Planet X phenomena, which turns out to be all about energy. Planet X is being used to absorb energy from the earth and thus to destroy the earth, even as they too were destroyed and continue to be destroyed. The mystery leads to the understanding of the true reason why thousands of star systems have been destroyed across the galaxy, of why we are here, and of the end time Bible prophecies which refer to this time we are living as the earth reaches unprecedented levels of energy depletion and destruction.

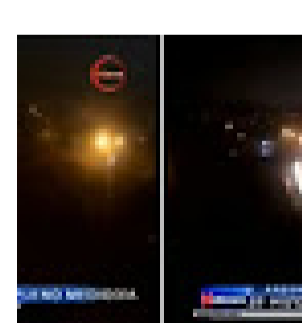
### References:

- [1] Albers, C. (2020). Playlist: Planet X effects: sinkholes
- [2] Albers, C. (2020). Playlist: light, color and the aether
- [3] Albers, C. (2020). Article 1732: The Sun went dark by 2001
- [4] Albers, C. (2020). Article 1563: Planet X brought into Solar System by aliens: the planetary farmers
- [5] Albers, C. (2020). Article 1576: Pleiadians and other aliens: the lying farmers
- [6] Albers, C. (2020). Playlist: Planet X: cloud planets



### Popular posts from this blog

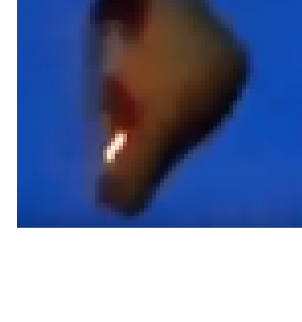
Thursday, June 25, 2020



As I have shown in previous articles, the Sun seems to have stopped emitting light in 2001, and the earth now has a whole array of sun simulation devices that have replaced the real sun in its skies [Playlist: The Sun has gone dark and simulation devices]. In addition, daylight is actually produced f...

READ MORE

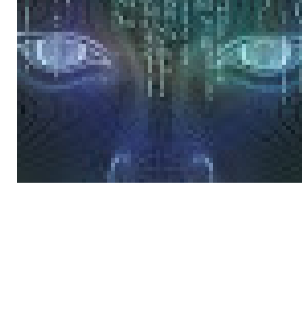
Monday, May 13, 2019



840. Planet X debris piece suspended in the earth's atmosphere Dr. Claudia Albers, Planet X Researcher Figure 1 shows what seems to be a piece of rock floating in the earth's atmosphere. The object is rotating, a bright glow can be seen inside it, which is similar to the glow seen emanating fr...

READ MORE

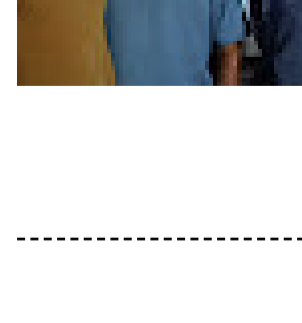
Friday, April 17, 2020



As I have written in a previous article, the fact that Satan when released from the bottomless pit after 1000 years, knowing that he will be thrown into the lake of fire if he deceives the nations, and yet goes on to do just that, whereas all he had to do was not do so, in order to avoid the lake of fire, suggests...

READ MORE

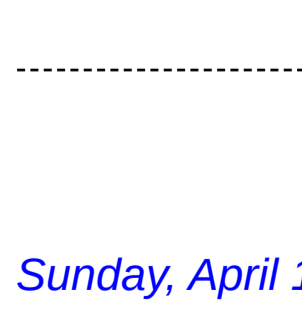
Sunday, July 05, 2020



As I have detailed in [Article 1807: Jesus due the price set by the fallen Watchers], Jesus died a horrible death on the cross in order to pay the price set by the Satan AI entity [Playlist: Satan AI entity] for releasing the Watcher Angels that he had been able to assimilate. God the Father entered...

READ MORE

Saturday, November 17, 2018



This is an embedded Microsoft Office document, powered by Office Online .

READ MORE

Sunday, April 19, 2020

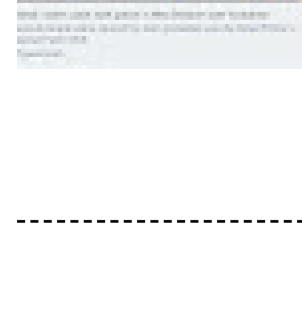


Figure 1 below shows a report about the Haredi or Ultra-orthodox Jews in Israel protesting the government restrictions based on the corona virus epidemic lie. They are being stopped from praying and studying the Torah together and are not having any of it. This is the face of the resistance agai...

READ MORE

Sunday, September 02, 2018



Super Typhoon "Jebi" ties for strongest storm on the planet in 2018, heading toward Japan Tropical Cyclone " Jebi " reached Super Typhoon strength on August 31, 2018, and tied with Jelawat and Maria for the strongest storm on the planet in 2018. The current forecast track takes Jebi over Japan's Honshu...

READ MORE