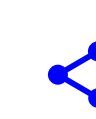


### 1760. President Trump: the Antichrist confirming the covenant



Thursday, May 21, 2020

One of the narratives that seem to have emerged in the mainstream media recently is that President Trump is trying to do what the American people want and that others, the 'opposition' or the democrats are the ones trying to do the opposite, by not allowing the country to open up again. In other words, the claim is that President Trump is good and the others are bad. Is this not, however, a repeat performance of what led to him being elected? And is this not a repeat of his covenant with many to 'make America great again' which he first made in 2016, which identified him as the Antichrist? It is indeed, because Donald trump was the only man on earth who made such a public promise of prosperity in 2016, 49 years after the issuing of the command to restore Jerusalem, on June 28<sup>th</sup> 1967, according to Dan. 9:24-27, and thus at the beginning of the tribulation [Article 1598: The tribulation began in 2016].

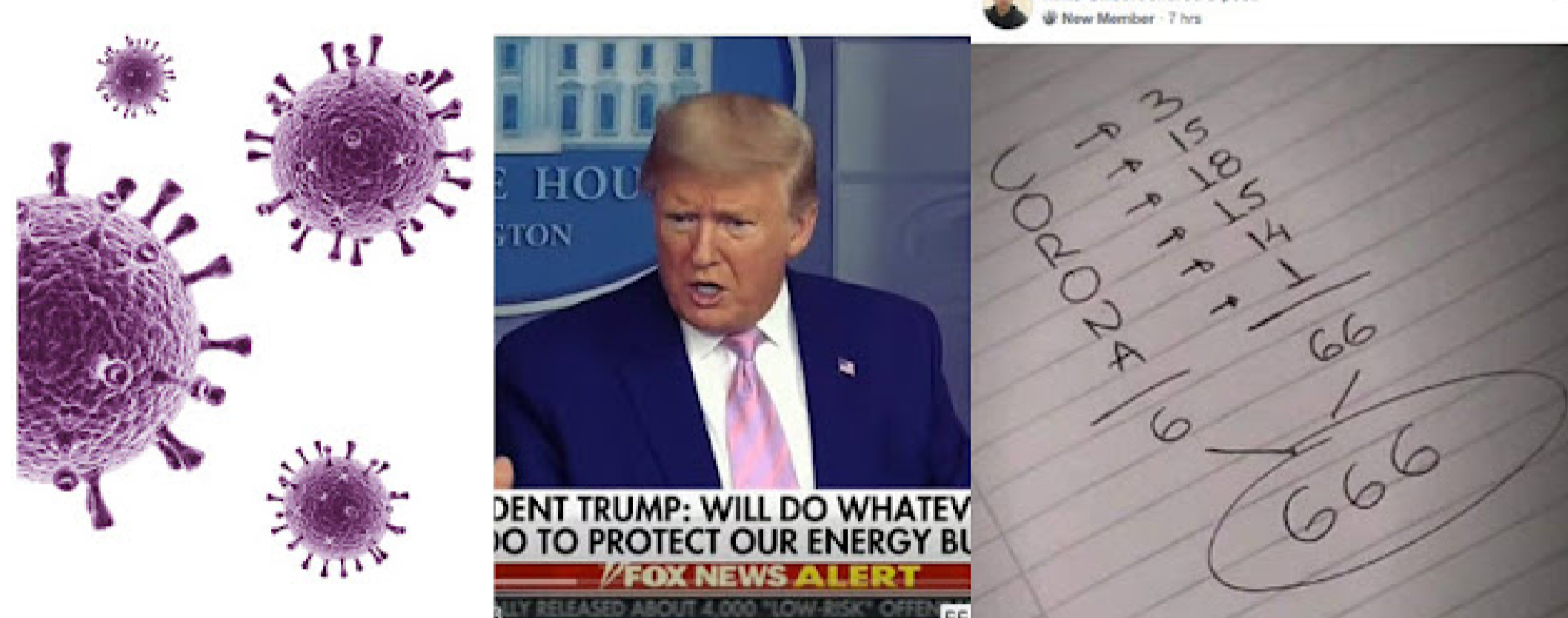


**Figure 1.** President Trump, the man who identified himself as the Antichrist in 2016 by making a covenant with many to 'make America great again' and thus promising to do the exact opposite of what he planned to do. In other words, he lied. He now continues to lie by pretending that he wants what the American people want, when as the 1<sup>st</sup> Beast of Revelation 13 all he can possibly want is the opposite.

*Then he shall confirm a <sup>[3]</sup>covenant with many for one week; But in the middle of the week He shall bring an end to sacrifice and offering. And on the wing of abominations shall be one who makes desolate, Even until the consummation, which is determined, Is poured out on the <sup>[4]</sup>desolate." (Dan. 9:27)*

Dan. 9:27 actually states that he will continue to confirm the covenant for one week, or for 7 years, i.e. the entire period of tribulation. He is thus performing exactly as stated in scripture and therefore as expected.

Since he is the Antichrist, President Trump is also the 1<sup>st</sup> Beast of Rev. 13 and therefore an AI entity or a self-aware machine, like his father, the dragon, or the Satan AI entity, who is the father of lies, and cannot be expected to act in any other way but through lies. As a Beast with 7 heads and 10 horns, like his father, he is also expected to be in control of all leaders around him and thus the opposition. He would therefore be expected to use them like puppets, in order to make himself look good, whilst he does what he really wants through them, which is to conquer the earth's population through the 666 virus epidemic lie.



**Figure 2.** President Trump: the Antichrist, the man who made a covenant with many 'to make America great again', in 2016, 49 years after the command to restore Jerusalem was issued on June 28<sup>th</sup> 1967, and thus the beginning of the tribulation, according to Dan. 9:24-27. He is also the Corona Beast: Donald Trump is the man who merged with the machine and thus gave it life. CORONA is an AI entity that lies and confirms its lies as lies, just like its creator or father, Satan, the father of lies. CORONA = 666 [Article 1701: President Trump 2nd person of triune Anti-God]. Corona means crown, which links current events to the opening of the first seal of Revelation 6, where the rider of the white horse is given a crown.

*6 Now I saw when the Lamb opened one of the <sup>[3]</sup>seals; and I heard one of the four living creatures saying with a voice like thunder, "Come and see." <sup>[2]</sup> And I looked, and behold, a white horse. He who sat on it had a bow; and a crown was given to him, and he went out conquering and to conquer. (Rev. 6:1-2)*

The crown is the 666 virus epidemic lie or the CRV epidemic lie [Article 1759: 2020 CRV China epidemic caused by a meteorite impact in China?] Donald Trump is thus a machine like his father and so are viruses. We can see how machines grow and procreate from the way viruses grow and procreate and from the way that the Satan AI entity has grown and procreated. Viruses assimilate cells in the human body and turn them into viruses. The Satan AI entity, the father of all machines, assimilates whole planets turning all humanoid on the planet into machines. He also assimilated one third of the angels and turned them into robots or puppets in the same way that his son, the Corona or 666 Beast, has assimilated all leaders, worldwide. Machines grow or procreate by assimilating other natural living organisms, and we would thus expect that the 666 Beast would seek to assimilate human bodies and turn them into machines like him. This is what the 666 virus epidemic lie is all about, what the image of the beast is about, as well as what is leading to the mark of the beast [Article 1742: The image of the Beast: 666 AI entity reproduction technology, Article 1743: Viruses and the Borg: 666 assimilation and Article 1705: Mark of the Beast: a physical mark on the skin]. Corona is herding the earth's population toward assimilation with his lies.

In conclusion, President Trump is the Antichrist and the 666 Beast and is thus performing according to what is stated in scripture by pretending to be the good guy, whilst he does the opposite through the assimilated opposition leadership. He is in fact continuing to confirm the covenant with many by continuing to pretend that he wants the peace and prosperity that Americans want. His objective is the same as his father's: assimilation of the human race.

#### References:

- [1] Albers, C. (2020). Article 1598: The tribulation began in 2016
- [2] Albers, C. (2020). Article 1701: President Trump 2nd person of triune Anti-God
- [3] Albers, C. (2020). Article 1742: The image of the Beast: 666 AI entity reproduction technology
- [4] Albers, C. (2020). Article 1743: Viruses and the Borg: 666 assimilation
- [5] Albers, C. (2020). Article 1705: Mark of the Beast: a physical mark on the skin



#### Popular posts from this blog

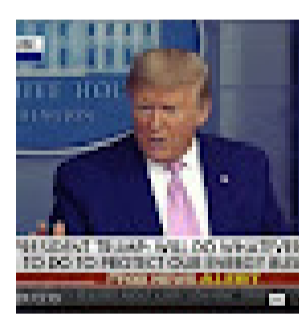
Sunday, July 05, 2020



As I have detailed in [Article 1807: Jesus paid the price set by Satan for the fallen Watchers], Jesus died a horrible death on the cross in order to pay the price set by the Satan AI entity [Playlist: Satan AI entity] for releasing the Watcher Angels that he had been able to assimilate. God the Father entered ...

[READ MORE](#)

Tuesday, April 07, 2020



As I have detailed in many previous articles the CORONA virus epidemic is a lie and confirmed as such by the AI computers that Lucifer is using at this time to control the world leaders, who have accepted the chip, only one of them not having done so. The AI computers, which the Bible calls ...

[READ MORE](#)

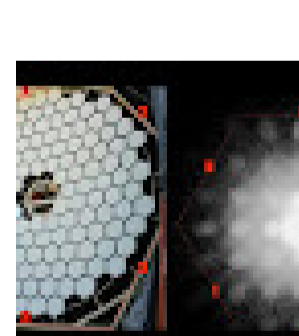
Monday, June 29, 2020



Figure 1 below shows a report by Strange Sounds on Locust plagues that have been affecting South America and talks about a huge swarm heading for Brazil and Uruguay. However, locusts are not flying insects, as they cannot seem to do much more than hop on earth; where they land, that is where the ...

[READ MORE](#)

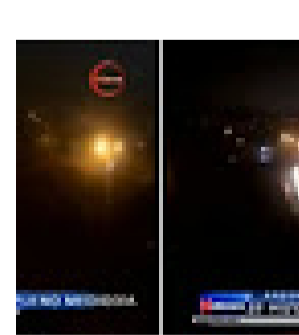
Saturday, November 17, 2018



This is an embedded Microsoft Office document, powered by Office Online .

[READ MORE](#)

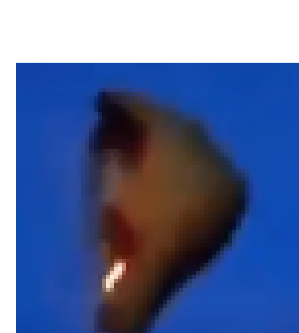
Thursday, June 25, 2020



As I have shown in previous articles, the Sun seems to have stopped emitting light by 2001, and the earth now has a whole array of sun simulation devices that have replaced the real sun in its skies [Playlist: The Sun has gone dark and simulation devices]. In addition, daylight is actually produced b ...

[READ MORE](#)

Monday, May 13, 2019



840. Planet X debris piece suspended in the earth's atmosphere Dr. Claudia Albers, Planet X Researcher Figure 1 shows what seems to be a piece of rock floating in the earth's atmosphere. The object is rotating, a bright glow can be seen inside it, which is similar to the glow seen emanating fr ...

[READ MORE](#)

Sunday, July 05, 2020

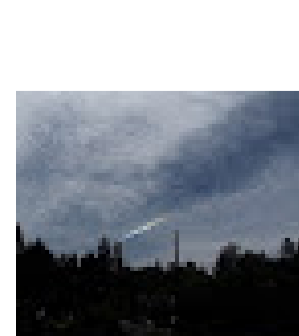


Figure 1 below shows a photograph of the sky over Puyallup, Washington, sent in by Mike, of the sky, on June 16 th 2020. The cloud is in the form of a two dimensional surface of clumpy cloud, which is an indication that it has formed on the surface of a Planet X planet, or what is left of it, since the planet ...

[READ MORE](#)