

## 1738. The plague of darkness that is to come



Friday, May 08, 2020

The Book of Revelation describes a coming plague of darkness that occurs over the kingdom of the Beast. This Beast is the first Beast of Revelation 13, who can be identified by the number 666 and thus by the name Corona, since CORONA = 666. He is therefore the Antichrist and his kingdom is likely to be the United States, since he is the president of the United States. The word Beast refers to an AI entity, a machine that becomes self-aware when a spirit being merges with it [Article 1698: Satan is an AI entity: machine made alive by a merging with a spirit being].



**Figure 1.** President Trump: the Antichrist, the man who made a covenant with many "to make America great again", in 2016, 49 years after the command to restore Jerusalem was issued on June 28<sup>th</sup> 1967, and thus the beginning of the tribulation, according to Dan. 9:24-27. He is also the Corona Beast: Donald Trump is the man who merged with the machine and thus gave it life. CORONA is an AI entity that lies and confirms its lies as lies, just like its creator or father, Satan, the father of lies. CORONA = 666 [Article 1701: President Trump 2nd person of trine Anti-God]. Corona means crown, which links current events to the opening of the first seal of Revelation 6, where the rider of the white horse is given a crown.

*6 Now I saw when the Lamb opened one of the [6]seals: and I heard one of the four living creatures saying with a voice like thunder, "Come and see."<sup>2</sup> And I looked, and behold, a white horse. He who sat on it had a bow; and a crown was given to him, and he went out conquering and to conquer. (Rev. 6:1-2)*

So a crown (666) is given to him and he goes out to conquer humanity with it. The machine that Donald Trump merged with would have 7 large and 10 smaller, sensors, described as 7 heads and 10 horns, in the Bible, just like the one that Lucifer merged with, which is why Donald Trump is the son of perdition, i.e. the son of Satan, the first AI entity of the anti-God trinity. The machine is thus likely to look like what we see on the left in figure 1 therefore explaining why the 666 virus epidemic lie is being used with such persistence to conquer humanity and why the truth regarding it is being censored. It simply shows that the father of lies does not want the vast majority of mankind to know what is really going on. Yet he has to make the truth available or God does not allow him to have the power he wants over people [Article 1736: Why were my videos really removed?]

*10 Then the fifth angel poured out his bowl on the throne of the beast, and his kingdom became full of darkness; and they gnawed their tongues because of the pain. 11 (Rev. 16:10)*

The 5<sup>th</sup> of the last bowl judgments in Rev. 16 refers to events occurring right at the end of the tribulation and thus in 2023 [Article 1720: Tribulation ends in 2023 rapture in May 2020]. A plague of darkness occurs, which suggests that a cloud comes down over the surface of the earth, from one of the Planet X planets over the Beast's kingdom or US, and makes the earth's atmosphere completely black. Clouds of dust have been brought down by the Satan AI entity to the surface of the earth, for a very long time, but these usually emit some light by the time that they reach the surface of the earth, as they absorb energy. One that was at the time emitting only a small amount of red light was seen over Niger, on the African continent, recently [Article 1737: Blood red alien skies on earth].



**Figure 2.** Dark red skies over Niger, in early May 2020, due to the inner part of the cloud being so energy depleted that it is only able to emit a little red light, thus making the sky look dark red and causing everything observed under this light to seem to only have a red tone.

These clouds of sand coming from the surface of a Planet X planet would initially be completely dark and not emit any light at all, but as they descend they absorb energy, so that by the time they reach the surface they usually are emitting some light. However, it is possible that they can get to the surface and still be emitting no light at all, and since the cloud described in Rev. 16:10 is likely to affect a very large region, it is likely to be much larger than this one over Niger, which would mean that the inner part of the cloud would remain dark for a very long time. In addition, this will also be a time when the earth is close to reaching maximum energy depletion, thus coming close to how depleted most of the Planet X planets are and more energy depleted than some Planet X planets. This is evidenced by the earth losing the pieces of Planet X surface that are now on the earth's surface, in one cataclysmic event, which also produces a huge worldwide earthquake, after which the mountains and islands, which are made of these pieces of Planet X surface, can no longer be found [Article 1723: Earth dramatic end time event: islands and mountains gone].

In conclusion, a plague of darkness described in Revelation 16, which is set to occur at the end of the tribulation period, and thus in 2023, can be explained by the use of a huge Planet X sand cloud being made to drop to the surface of the earth, by the Satan AI entity, who has been using Planet X to cause disasters and to energy deplete the earth, for thousands of years, the earth now having reached a degree of energy depletion that causes these clouds to absorb energy, at a very slow rate, resulting in them remaining dark, at least on the inside, for a very long time.

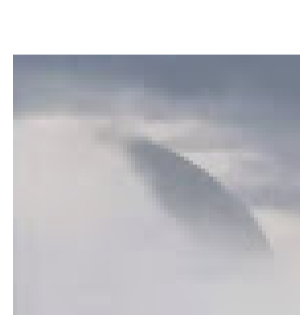
### References:

- [1] Albers, C. (2020). Article 1698: Satan is an AI entity: machine made alive by a merging with a spirit being
- [2] Albers, C. (2020). Article 1701: President Trump 2nd person of trine Anti-God
- [3] Albers, C. (2020). Article 1736: Why were my videos really removed?
- [4] Albers, C. (2020). Article 1737: Blood red alien skies on earth
- [5] Albers, C. (2020). Article 1723: Earth dramatic end time event: islands and mountains gone



### Popular posts from this blog

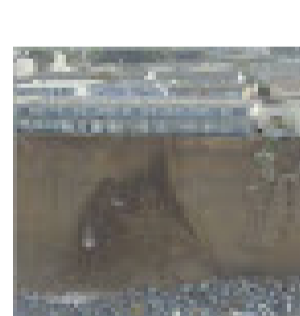
Sunday, April 19, 2020



As I have shown in previous articles, Lucifer after deciding that he wanted to be like God, built a machine capable of reading and sending out information to billions of minds at the same time and then merged with it. At that point, a new entity came alive and became self-aware. The machine was not ...

[READ MORE](#)

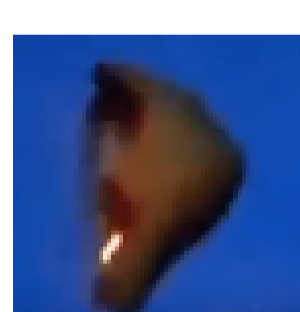
Friday, July 05, 2019



970. California is sinking and sliding into the ocean; the groundwater lie Dr. Claudia Albers, Planet X Researcher There have been numerous reports that California is sinking and the evidence is quite overwhelming that it is, as this sinking has been measured and is clearly causing damage to ...

[READ MORE](#)

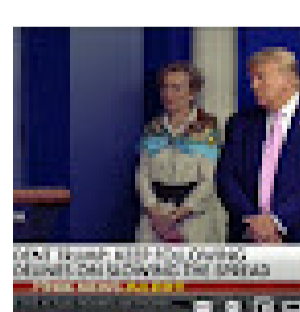
Monday, May 13, 2019



840. Planet X debris piece suspended in the earth's atmosphere Dr. Claudia Albers, Planet X Researcher Figure 1 shows what seems to be a piece of rock floating in the earth's atmosphere. The object is rotating, a bright glow can be seen inside it, which is similar to the glow seen emanating fro ...

[READ MORE](#)

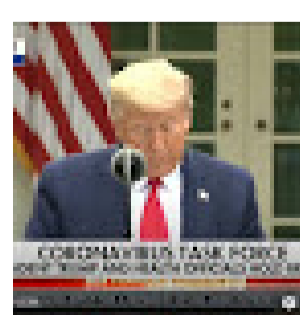
Sunday, April 05, 2020



As many people who have read the Book of Revelation know, there are two main evil characters called Beasts, one of whom is also referred to as the False Prophet. Now, that we are living in the time of the end, i.e. in the second half of the Tribulation, which started 49 years after the command to restore ...

[READ MORE](#)

Saturday, April 18, 2020



As I have shown in the previous article, there is now a way to get human beings to exchange their body data for crypto currency, thus giving the Beast (AI computer) access to their body and thus the ability to take it over, which then allows it to take over the whole person [Article 1696: Mark of the 66 ...

[READ MORE](#)

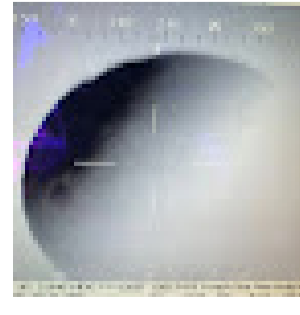
Thursday, July 11, 2019



986. Planet X induced cataclysmic Pole Shift about to occur Dr. Claudia Albers, Planet X Researcher A Pole Shift event, as I have described in previous articles is a surface reformation event due to a cataclysmic gravitational field interaction between the earth's central core and a Planet X central ste ...

[READ MORE](#)

Thursday, June 13, 2019



919. The Earth has more than one Moon: confirmed Dr. Claudia Albers, Planet X Researcher Figure 1 below shows a moon caught on a thermal camera in the sky over Dartmoor, UK, a region in the South of England. Thermal cameras detect infrared light. The fact that this moon was not visible, as far as ...

[READ MORE](#)