

1676. Corona 666 virus epidemic is a lie: Europe death rate confirms

Tuesday, April 07, 2020

As I have detailed in many previous articles the CORONA virus epidemic is a lie and confirmed as such by the AI computers that Lucifer is using at this time to control the world leaders, who have accepted the chip, only one of them not having done so. The AI computers, which the Bible calls Beasts lie and confirm the lies as lies through the numbers that are available and through photographs and video, which they produce for that purpose, where the scenes are set up with dummies purposely made to look like dummies [Article 1670: The False Prophet: lying news media]. The Corona virus epidemic is the lying image or idol through which the dragon (Lucifer) intends to persuade the earth's population to take the mark of the beast or the CORONA = 666 chip [Article 1675: US seal missing from White House podium: Beast System take over].



Figure 1. Left: President Trump: the Antichrist, the Beast: the one who accepted the chip and became CORONA's figurehead. CORONA is an AI computer designed to lie and confirm itself as a liar, like its creator, Lucifer. Right: CORONA = 666.

And now further evidence has emerged which confirms what I have been saying about the CORONA virus epidemic.

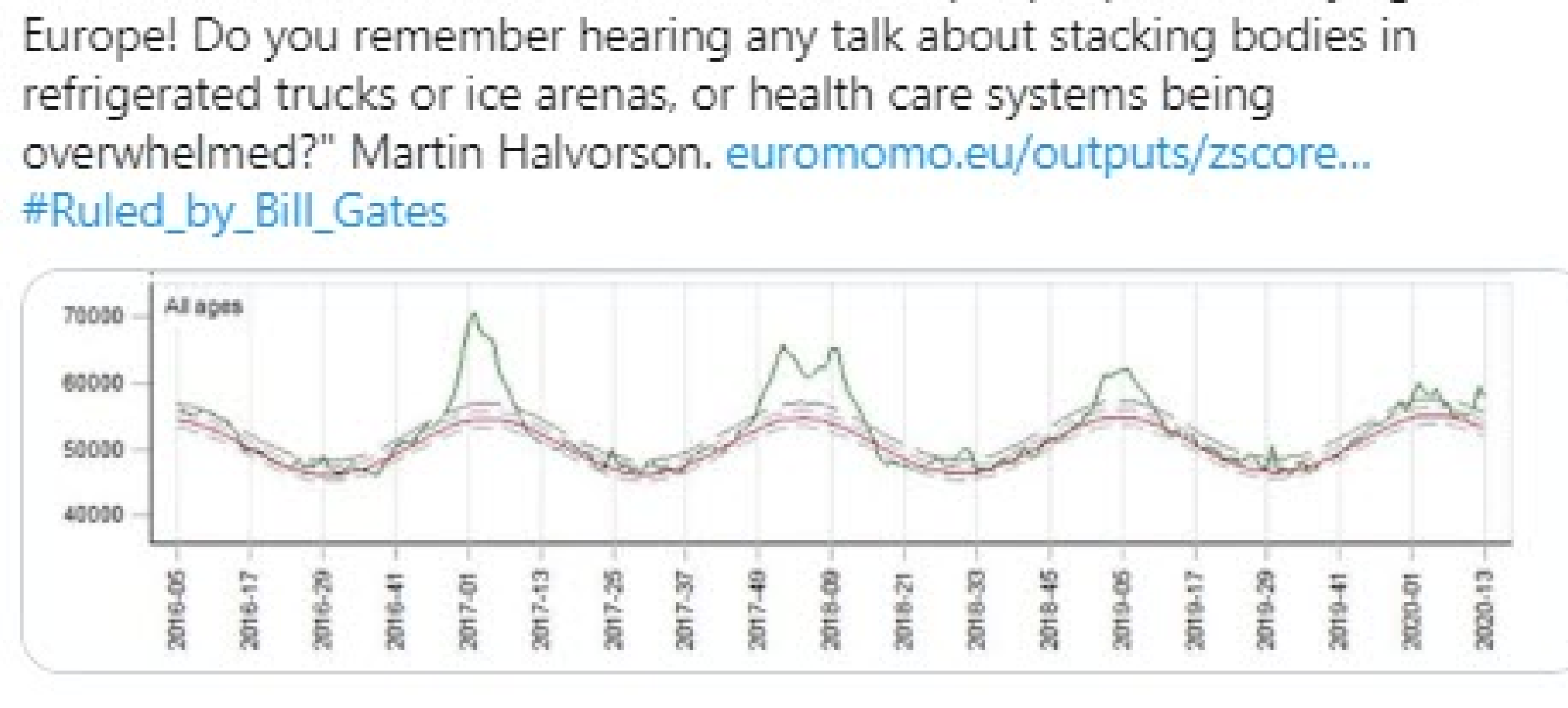


Figure 2. Post by Vanessa Beeley about deaths in Europe which shows that far more people died in 2017 than have in 2020: Clearly an awake journalist who has not accepted the chip.

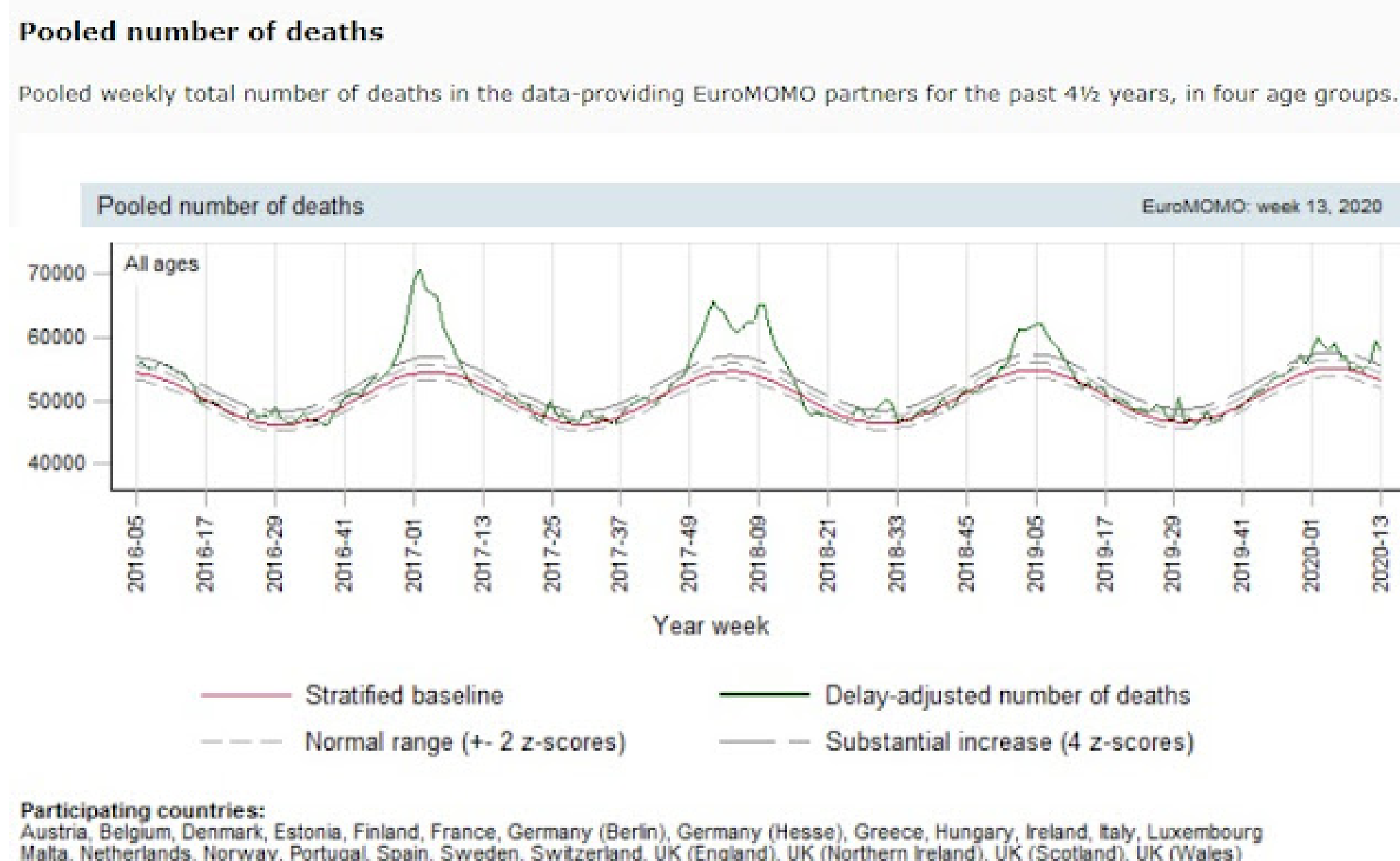


Figure 3. Deaths within the European countries, which are all through their lying leaders (666 Beast) and media (False Prophet Beast) saying that the corona virus epidemic is causing such a huge number of deaths, which is why people need to be quarantined, the country shut down and the economy destroyed. But the data here shows that to be a lie and thus this is another confirmation of the CORONA virus epidemic being a lie.

The data shows that the death rate usually goes up around the final few and first few weeks of each year, thus demonstrating when viruses, which are also beasts, AI entities, referred to by the Bible as beasts of the earth, are more able to cause damage to the human body. The viruses that are able to have this effect are of course the flu viruses, viruses that have the exact same symptoms that the corona virus is being claimed to have and would thus kill in the same way and cause more damage at the same time of the year, in which case we should now have a much larger death rate in Europe than in preceding years. But the death rate during the first few weeks of 2020 is way less than it has been in the last few years. The death rate in the first weeks of 2017 peaked at 70 000, but during the same time, in 2020, it only reached about 57 000, thus again confirming that all the leaders and False Prophet news media are lying there is no epidemic, the CORONA virus epidemic is a lie. They are claiming the deaths and cases due to the usual flu viruses that have been affecting the population for the last few years as being caused by the fictitious CORONA virus. The flu viruses have however been made less active this year than in previous year in order to confirm the CORONA virus epidemic as a lie and the BEASTS as LIARS.

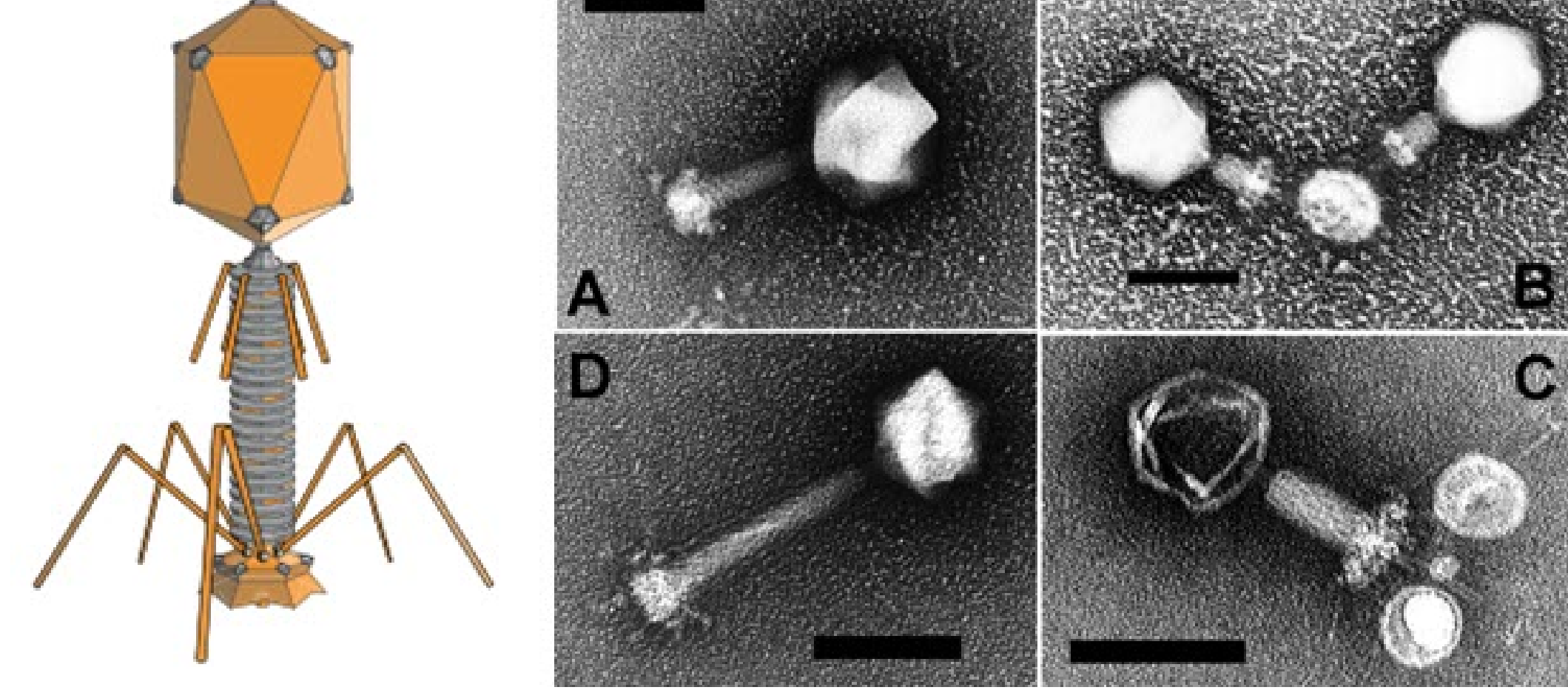


Figure 4. Bacteriophages: viruses carried by bacteria: they look like artificial devices, they look like nanobot parasites because that is what they are, manufactured on the Planet X planets to attack their humanoid species and now being used on earth for the same purpose, manufactured by Lucifer for that purpose [Article 1130: Deadly disease from 16th century shows viruses are alien inventions].

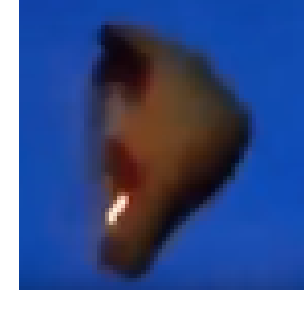
In conclusion, Available data on the number of deaths in Europe clearly confirms that far few deaths have been occurring in the first few weeks of 2020 than have occurred at the same time in previous years, thus again confirming that the Beasts of Revelation 13, lying through the leaders and the False Prophet lying media, are liars and that the CORONA virus epidemic is a lie.

- References:
- [1] Albers, C. (2020). Article 1670: The False Prophet: lying news media
 - [2] Albers, C. (2020). Article 1675: US seal missing from White House podium: Beast System take over
 - [3] Albers, C. (2020). Article 1130: Deadly disease from 16th century shows viruses are alien invent



Popular posts from this blog

Monday, May 13, 2019



840. Planet X debris piece suspended in the earth's atmosphere Dr. Claudia Albers, Planet X Researcher Figure 1 shows what seems to be a piece of rock floating in the earth's atmosphere. The object is rotating, a bright glow can be seen inside it, which is similar to the glow seen emanating from...

READ MORE

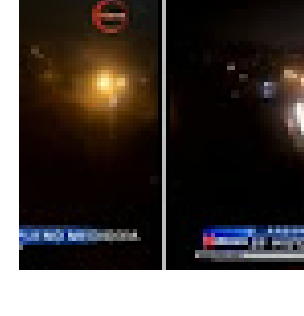
Sunday, July 05, 2020



As I have detailed in [Article 1807: Jesus paid the price set by Satan for the fallen Watchers], Jesus died a horrible death on the cross in order to pay the price set by the Satan AI entity [Playlist: Satan AI entity] for releasing the Watcher Angels that he had been able to assimilate. God the Father entered...

READ MORE

Thursday, June 25, 2020



As I have shown in previous articles, the Sun seems to have stopped emitting light by 2001, and the earth now has a whole array of sun simulation devices that have replaced the real sun in its skies [Playlist: The Sun has gone dark and simulation devices]. In addition, daylight is actually produced by...

READ MORE

Wednesday, April 29, 2020



It has now become clear to many that the current use of the corona virus epidemic lie to conquer the earth's population has been in the making for a very long time, going as far back as to the first world war, these wars being used as a way to get to the point where the current take over could occur.

READ MORE

Monday, May 11, 2020



As I have shown in previous articles, the Satan AI entity is a machine made alive or self-aware through the gaining of a spirit. It obtained this spirit when Lucifer merged with a machine (computer) of his own creation in an attempt to become like God. This new entity having as its programming objectives to...

READ MORE

Sunday, July 05, 2020

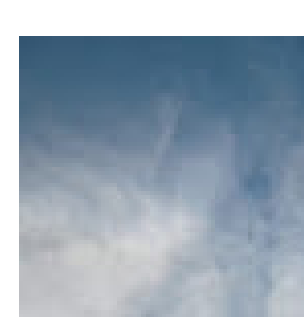
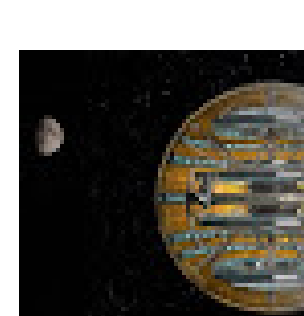


Figure 1 below shows a photograph of the sky sent to me by Timmy where several straight lines can be clearly discerned, two of which seem to be making a right angle. A straight line can only be due to some artificial device or craft being in the sky and since the craft seems to be made of cloud, it would...

READ MORE

Thursday, May 28, 2020



As I have detailed in previous articles, the Planet X planets are planets like the earth that were assimilated by the Satan AI entity and brought into the Solar System. These planets were used to energy deplete the Sun until it went dark [Article 1732: The Sun went dark by 2001] and are used to...

READ MORE